



# EYFS Summer Term 1

## The BIG question - What happens on the Farm?



### Supporting your child's learning at home

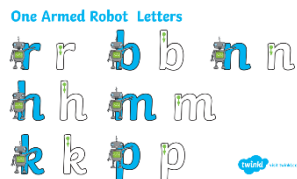
Please share your child's reading book with them and write a comment in the reading diary. Please continue to fill in your Reading Rockets for a chance to win a prize in our weekly Reading Challenge (reading 5 times throughout the week). These are collected in every Friday and new slips are handed out every Friday. Please ask your class teacher if you need one.

### Literacy

As resilient readers, we'll be reading & discussing a variety of texts including looking at different seasons, changing seasons around the world, non-fiction books, poetry and celebrations.

We will continue to develop our comprehension skills by answering questions related to books read in class and during our individual read. We will continue our weekly visit to the school library and swap our returned book for a new choice - **on Tuesdays!**

Following the Little Wandle Letters and Sounds Revised Phonics programme we will revisit Phase 3 digraphs and trigraphs learnt in Spring term. We will read these in longer words and develop the skill of reading sentences.



As Wonderful Writers we will continue to develop the ability to link sounds to letters. We will continue to learn how to correctly form each letter of the alphabet, focusing on our one arm robot letters and zig-zag letters. We will develop our writing skills to write simple sentences that can be read by others.



### Maths

As Marvellous Mathematicians, we will practice writing our number formation. We will continue counting up to and beyond 20, developing a better understanding of numbers up to 20. We will build numbers up to 20 and look at number patterns. We will continue to develop our understanding of 1 more and 1 less and begin to look at adding and taking away. We will deepen our understanding of odd and even numbers.

We will begin to explore 3d shapes; looking at the 2d shapes within these and using 3d shapes within our environment. We will continue to develop our knowledge of repeating patterns and practise identifying the unit of repeat, including spotting errors in AB patterns. We will continue to deepen our understanding of 2d shapes, selecting shapes for a purpose and describing the properties of shapes.

We will continue our cake cooking to develop understanding of mass and weight. We will develop our understanding of measures including capacity, mass, length, height and time. We will use a range of resources practically inside and outside the classroom to support mathematical thinking.

### Personal, Social and Emotional Development

We will continue to develop friendship skills and work cooperatively with others. We will show sensitivity towards the needs of others, whilst remembering how to be kind to each other. We will continue to focus our attention to what the teacher says and follow instructions involving several ideas or actions. We will develop confidence to try new activities and develop our resilience when completing a challenge. We will continue to develop personal needs skills such as dressing ourselves independently and using the toilet. We will continue to take part in weekly PSHE lessons to support our PSED learning.

|  |  |
|--|--|
| <p><b>Understanding the world</b><br/> As super scientists we will explore the changes that take place in our local environment as the weather (hopefully) warms up. We will use our senses to notice changes in the trees, weather and animals we see. We will visit our school pond. We will make observations and drawings of animals and plants at the farm.</p> <p>As great geographers, we will think about animals habitats. We will look on a map to find farms in our local area. We will discover how plants grow and look at the life cycles of some creatures.</p> <p>As heroic historians we will compare farms in the past to nowadays; looking at changes in machinery and animal uses.</p> | <p><b>Expressive Arts</b><br/> As amazing artists and dynamic designers, we will explore different media to create representations. We will develop drawing skills. We will learn a variety of songs linked to farms. We will practice using different techniques including scrunching, tearing and cutting skills such as creating a fringe effect. We will use our imagination to create stories or act out situations that have we have listened to in books and songs.</p>   |
| <p><b>Religious Education</b><br/> During the Summer term we will be focusing on a number of celebrations including Father's Day and Pentecost. We will continue to follow the Emmanuel Project for our RE lessons, teaching us about different religions and helping us understand other people's values and beliefs.</p>   | <p><b>Communication and Language</b><br/> We will continue to develop our speaking and listening skills in all of our areas of learning. We will practise listening to stories, accurately anticipating key events and ask questions. We will practise focusing our attention to what others say and respond appropriately. We will follow instructions to perform simple tasks in the classroom and the rest of the school. We will ask an adult for help when we need it. We will express ourselves using our words and explain what has happened.</p> |
| <p><b>Physical Development</b><br/> We will develop the correct pencil grip to help us write and form letters correctly. We will use the outdoor space to develop our gross motor skills on the climbing frame, tunnel, digging pit, bikes and scooters as well as using a wide range of equipment. This develops our muscles to help with writing as well as keeps our bodies fit and strong.</p> <p><b>PE - Monday (please send your child into school in PE kit)</b><br/> In our P.E. sessions we will develop ball skills including throwing, catching and kicking.<br/> <b>Please make sure that long hair is tied back &amp; earrings are removed for PE.</b></p>                                    |  |
| <p>We are really pleased with how well the children have settled into Early Years. If you have any messages for your child's teacher, please email your child's class teacher using the email address: <a href="mailto:earlyyears@trimley.net">earlyyears@trimley.net</a></p> <p><b>Teachers check the class emails regularly before 8:30am and after school and will always respond to any concerns or queries that you wish to discuss.</b></p> <p>Thank you for your support and understanding.</p>   |  |