



# Newsletter

01394 284130  
[www.trimley.net](http://www.trimley.net)  
email: [office@trimley.net](mailto:office@trimley.net)  
7<sup>th</sup> February 2023

Dear Parents & Carers

As we approach the Half Term break it seems a good time for a few reminders.

## **Parking and Road Safety**

You may have noticed that staff have been patrolling the front of the school, on the main road, at the beginning and end of each day. The reason for this is that we have been very concerned at the number of complaints that we have been receiving - not only from our neighbours, but also motorists passing by at school times.

We have had an increased number of calls from people complaining about parking - over driveways and on paths, inconsiderate behaviour of motorists towards pedestrians on the path and reports of several near incidents. Sadly, there was a very close call last month between a motorist and pedestrians on their way into school. Although a very scary moment for everyone concerned, we are pleased to confirm that there was no serious injury, but the incident did involve a visit to A&E.

We have been in touch with Suffolk Police and they will be popping by on unannounced visits to help keep an eye on the situation at the front of the school.

**PLEASE BE MINDFUL OF WHERE YOU PARK YOUR VEHICLE, CYCLE, SCOOT AND CROSS THE ROAD** for everyone's safety and peace of mind.

## **Attendance & Absences**

Just a quick reminder of our Attendance Policy - our Quick Guide has been added to this Parentmail and the full policy is available on our website.

The school day begins in the classroom at 8:55am, children should be in the classroom to begin Registration and lessons at this time. Therefore, it is recommended that children are in school for 8:50am. The main doors will close at 9am and any latecomers must report to the main office. Children arriving between 9 and 9:15am will receive a late mark, children arriving after 9:15am without a reasonable or acceptable reason for lateness will receive an absence mark.

Please remember to contact the school on the first and each subsequent day of absence, either by phone, leaving a message on the answer system or by Parentmail.

Please DO NOT use Parentmail to advise of holiday absences. If you are intending that your child will be absent from school, ie. for a holiday, please complete the Leave of Absence Form at least 5 days before the absence is to take place. Forms are available from the main office.

## **Parents' Evening**

If you have not yet made your appointment with your child's teacher, please contact the main office on 01394 284130 to arrange this. We still have a limited number of appointments available after the Half Term break.

## **Friday 10<sup>th</sup> February – Friendship Day**

To mark the last day of this half term we will be having a non uniform day. For further information, please see the attached flyer from the PTA.

Mrs Jeffery is also offering a different menu on Friday:

Chicken goujons or veggie nuggets, with chips, baked beans & peas  
Followed by a chocolate heart shortbread biscuit

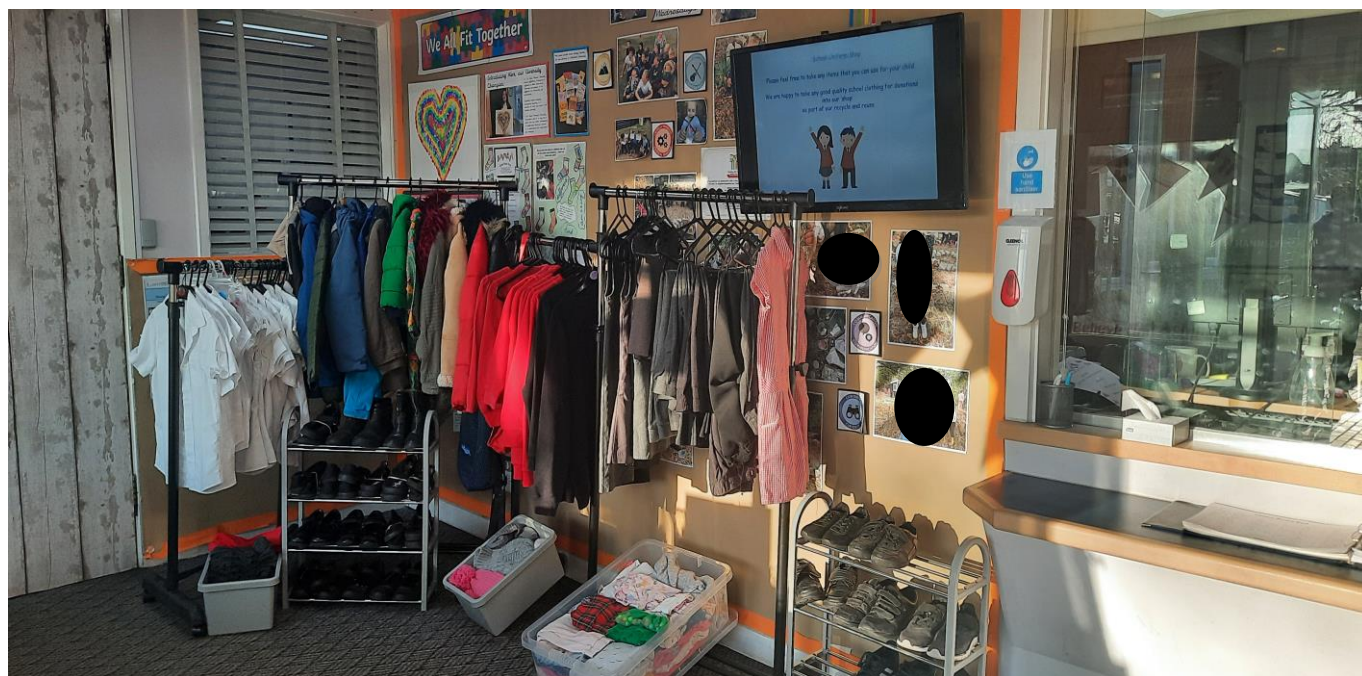
## **School Visits**

We have begun to book our school events and visits to the end of the school year. We will endeavour to give you as much notice as possible and to allow payment in instalments. The Diary Dates below have information of when these will be taking place to help with everyone's planning.

## **Trimley Treasure Trove**

Our 'Treasure Trove' is still open for parents and carers who may need to use it to help supplementing some essential food and cleaning items. Although we may not always manage to staff someone on the door to the area, it is open! If you would like to make use of the store, please pop round to the main office and ask for Mrs Barkworth. The best time is 8:55 – 9:05am.

We also have a fabulous supply of good quality used school uniform and we are beginning to build up stocks of non-uniform items too. A small supply is available at the main office so that everyone has access to it during Parents' Evenings and we are replenishing these with our stocks as required. If you would like to make use of the 'Treasure Trove' of clothing, please feel free to do so.



## **Years 3 & 4 – Farm & Country Fair**

We had hoped to be taking our children in years 3 & 4 to the Farm & Country Fair again this year. Sadly, however, due to a very large over subscription this year, we can no longer take part. Instead, we are working on an alternative trip for the summer term, details of which will follow home after the Easter break.

## Trimley St Mary Primary School Calendar of Events

Mon. 6 <sup>th</sup> February - Thurs. 9 <sup>th</sup> February 3 - 5pm Face to Face in main Hall 5 - 7pm Virtual Appointments	Parents' Evening Appointments Mon 6 <sup>th</sup> - EYFS & Year 1 Tue 7 <sup>th</sup> - Years 3 & 4 Weds 8 <sup>th</sup> - Years 5 & 6 Thurs 9 <sup>th</sup> - Year 2
<b>Week Commencing 13<sup>th</sup> February 2023 - Half Term</b>	
Mon. 20 <sup>th</sup> February - Thurs. 23 <sup>rd</sup> February 3 - 5pm Face to Face in main Hall 5 - 7pm Virtual Appointments	Parents' Evening Appointments Mon 20 <sup>th</sup> - EYFS & Year 1 Tue 21 <sup>st</sup> - Years 3 & 4 Weds 22 <sup>nd</sup> - Years 5 & 6 Thurs 23 <sup>rd</sup> - Year 2
Weds 8 <sup>th</sup> - Tues 14 <sup>th</sup> March	Bookfair
Mon. 13 <sup>th</sup> - Thurs. 16 <sup>th</sup> March	Bikeability - Groups 1 & 2
Thursday 16 <sup>th</sup> March	3N & 4M - Regent Theatre 'Demon Dentist' by David Walliams
Friday 17 <sup>th</sup> March	3V & 4T - Regent Theatre 'Demon Dentist' by David Walliams
Monday 20 <sup>th</sup> - Thursday 23 <sup>rd</sup> March	Bikeability - Groups 3 & 4
Week Commencing Monday 20 <sup>th</sup> March	Proposed Year 3 & 4 Production Days & Times TBC
Week Commencing Monday 20 <sup>th</sup> March	Yr6 - Thorpe Woodlands Residential Visit Group 1 (6V) Mon - Weds, Group 2 (6E) Weds - Fri
Wednesday 29 <sup>th</sup> March	Yr2 - Framlingham Castle Visit TBC
Friday 31 <sup>st</sup> March	Last Day of Spring Term
<b>Monday 3<sup>rd</sup> - Friday 14<sup>th</sup> April - Easter Holidays</b>	
Monday 17 <sup>th</sup> April	<b>Non Pupil Day</b>
Tuesday 18 <sup>th</sup> April	First Day of Summer Term
Friday 28 <sup>th</sup> April	EYFS - Easton Farm Park
Monday 1 <sup>st</sup> May	May Day Bank Holiday
Monday 8 <sup>th</sup> May	Bank Holiday
Tuesday 9 <sup>th</sup> - Friday 12 <sup>th</sup> May	Yr 6 SATs Week
Tuesday 23 <sup>rd</sup> May	Yr 1 - Colchester Zoo
Wednesday 24 <sup>th</sup> May	Class & Yr 6 year Book Photos
Thursday 25 <sup>th</sup> May	Yr 5 & 6 - Kentwell Hall
Friday 26 <sup>th</sup> May 2023	<b>Non Pupil Day</b>
<b>Week Commencing 29<sup>th</sup> May 2023 - Half Term</b>	
Thursday 6 <sup>th</sup> July	Yr 2 - Foxburrow Farm TBC